

GRAPHICAL REPRESENTATION OF DATA through SPSS

(A Text Tutorial)



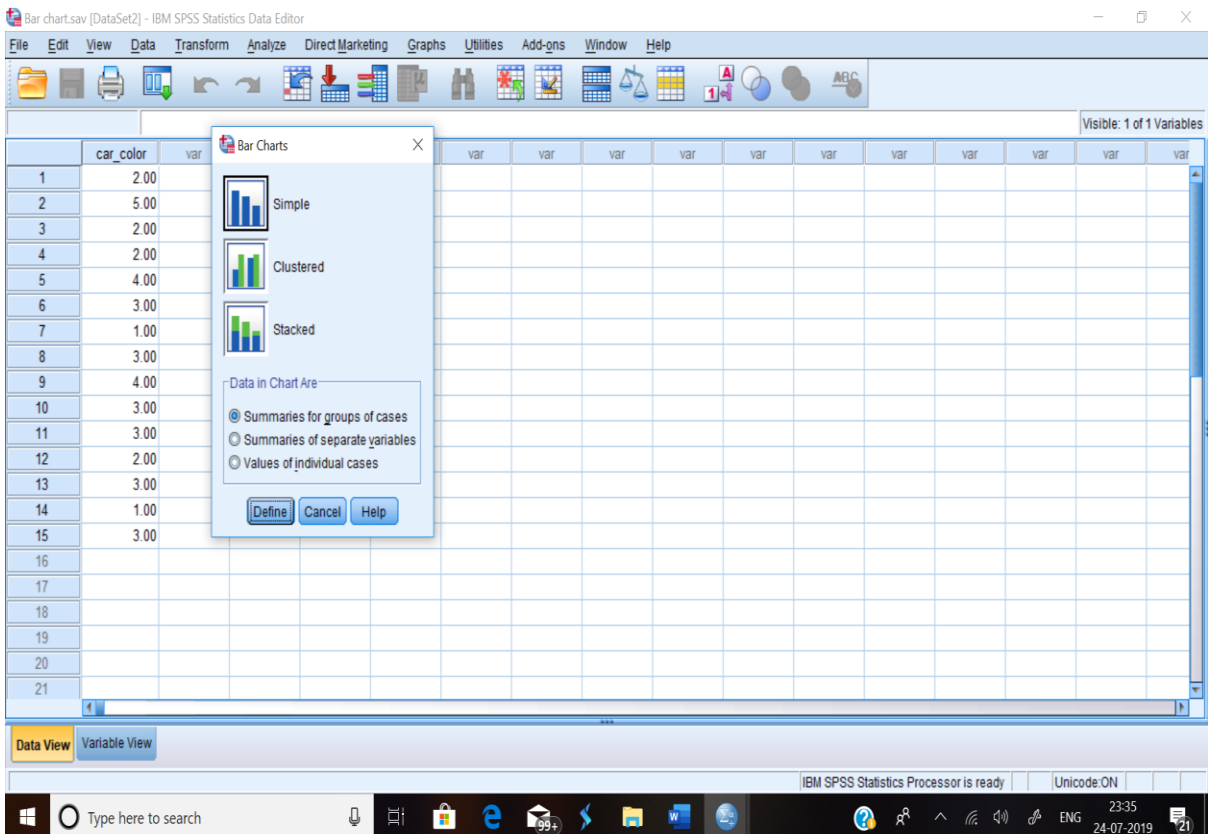
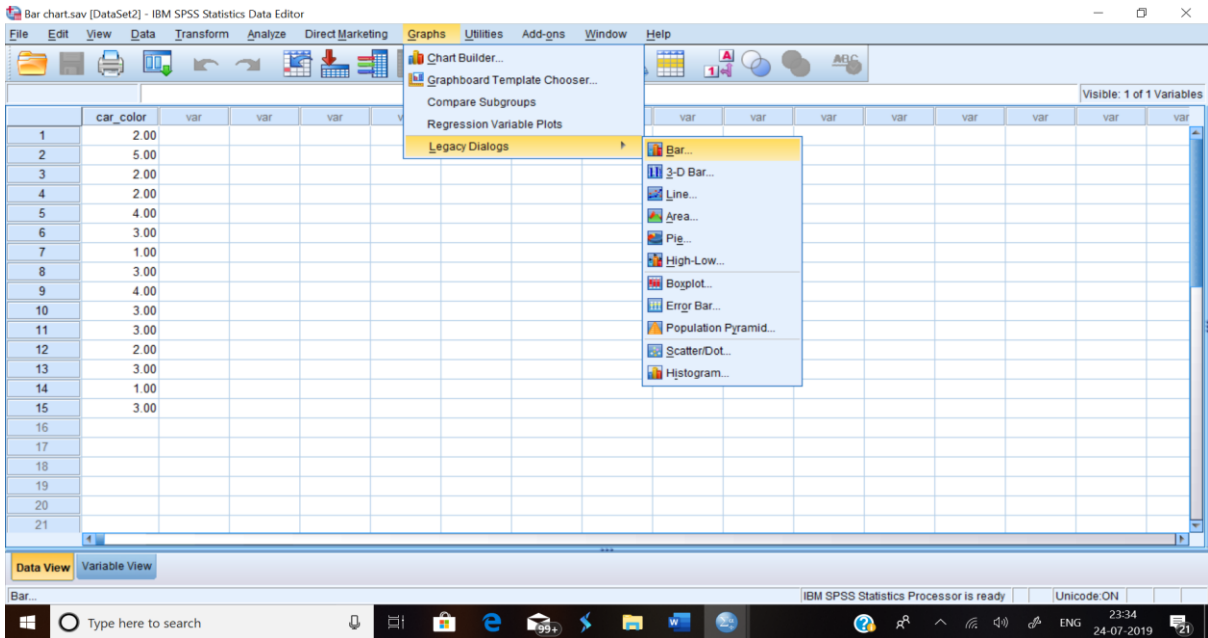
Dr. K. THIYAGU
Assistant Professor
Department of Education
Central University of Kerala
Kasaragod

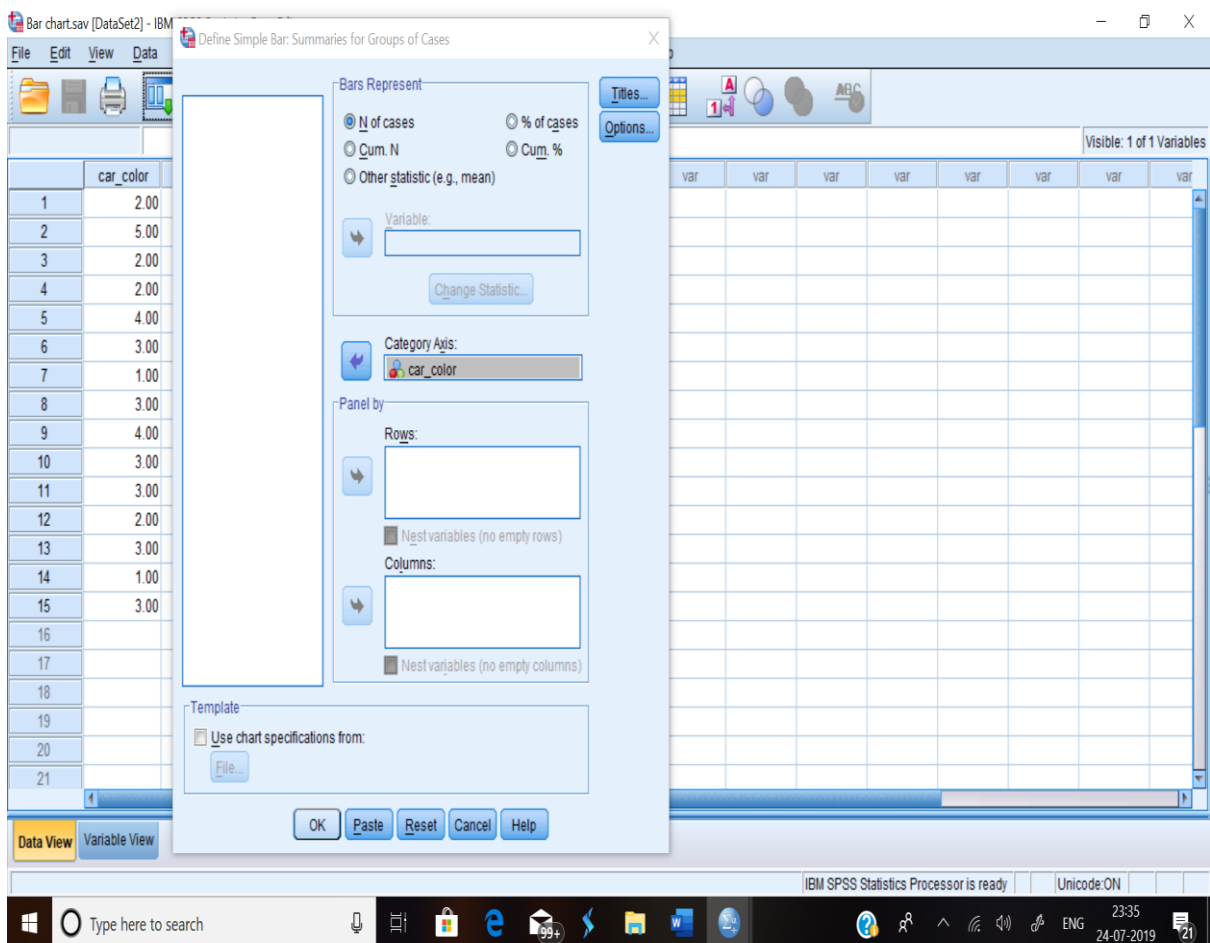
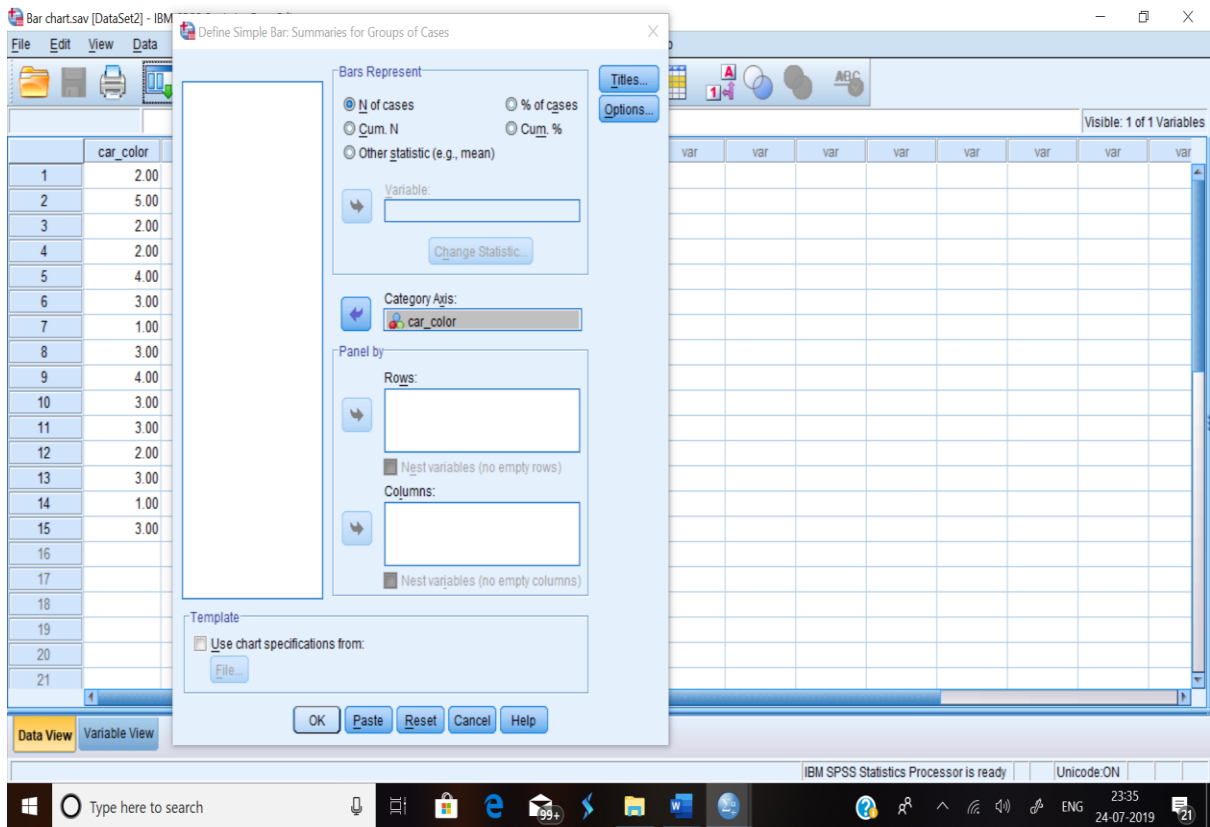


Bar Graph

Path

Graph – Legacy Dialogs -- Bar

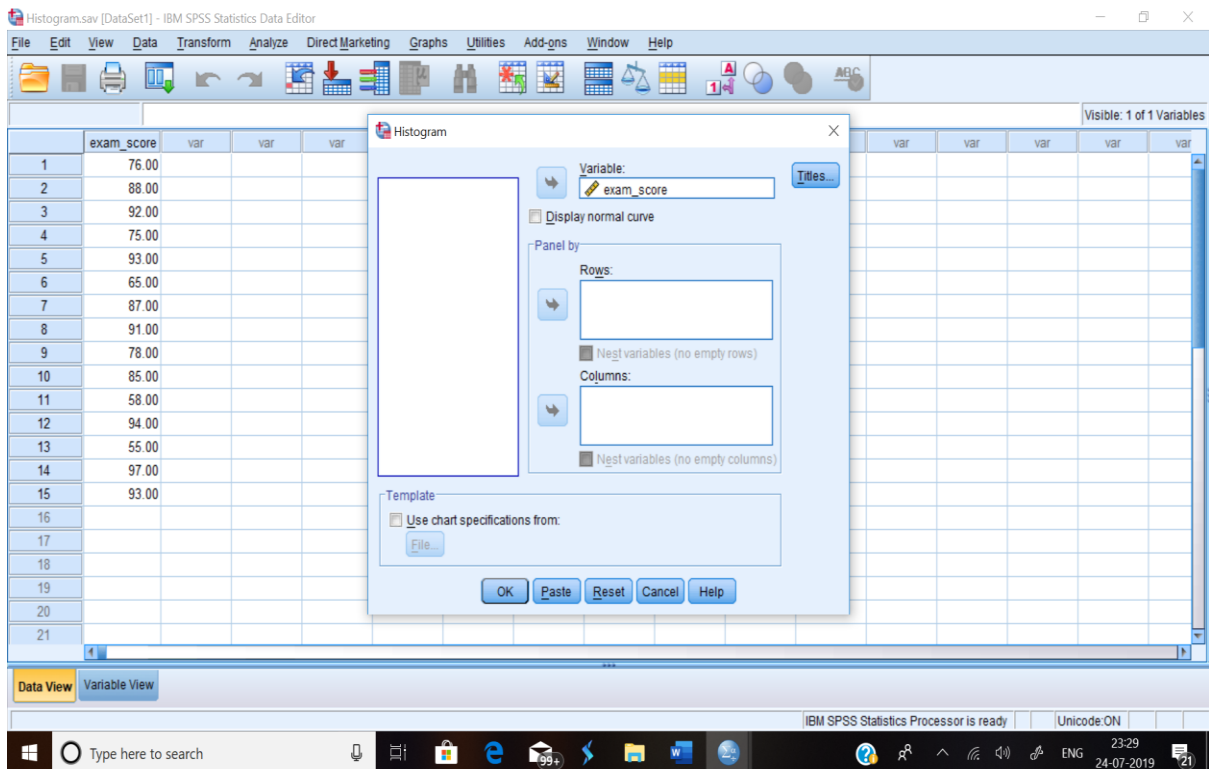
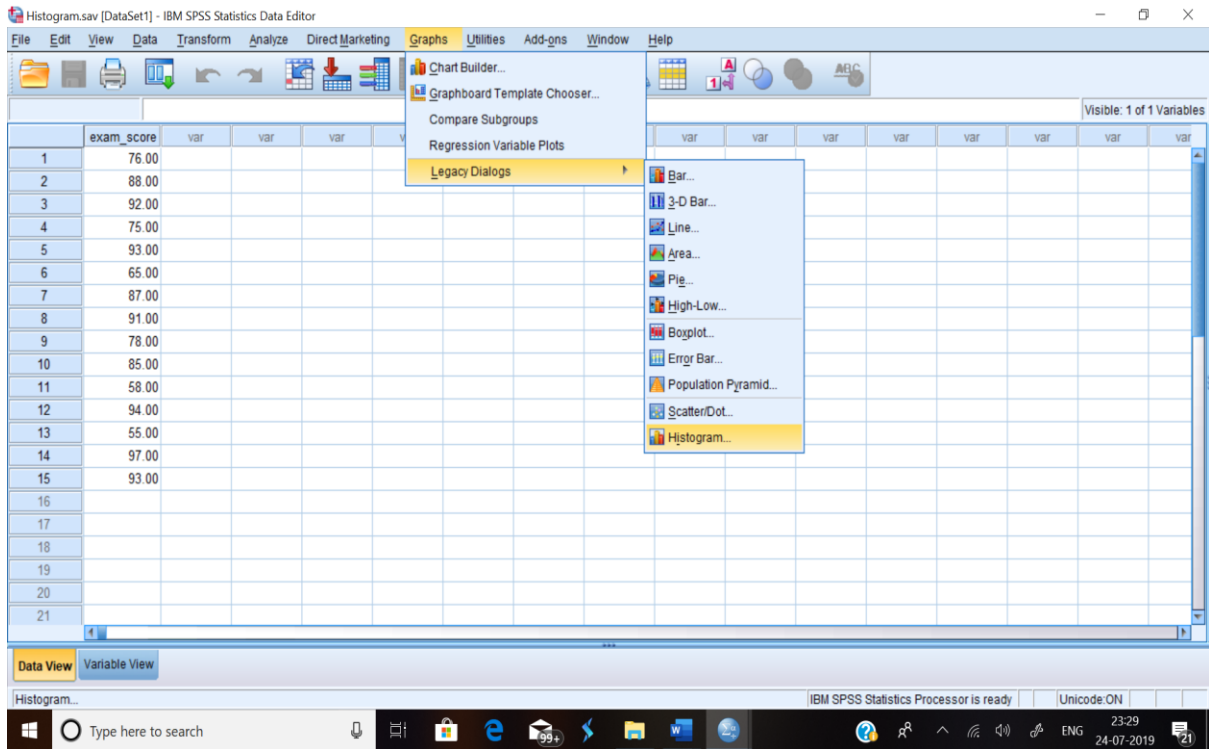


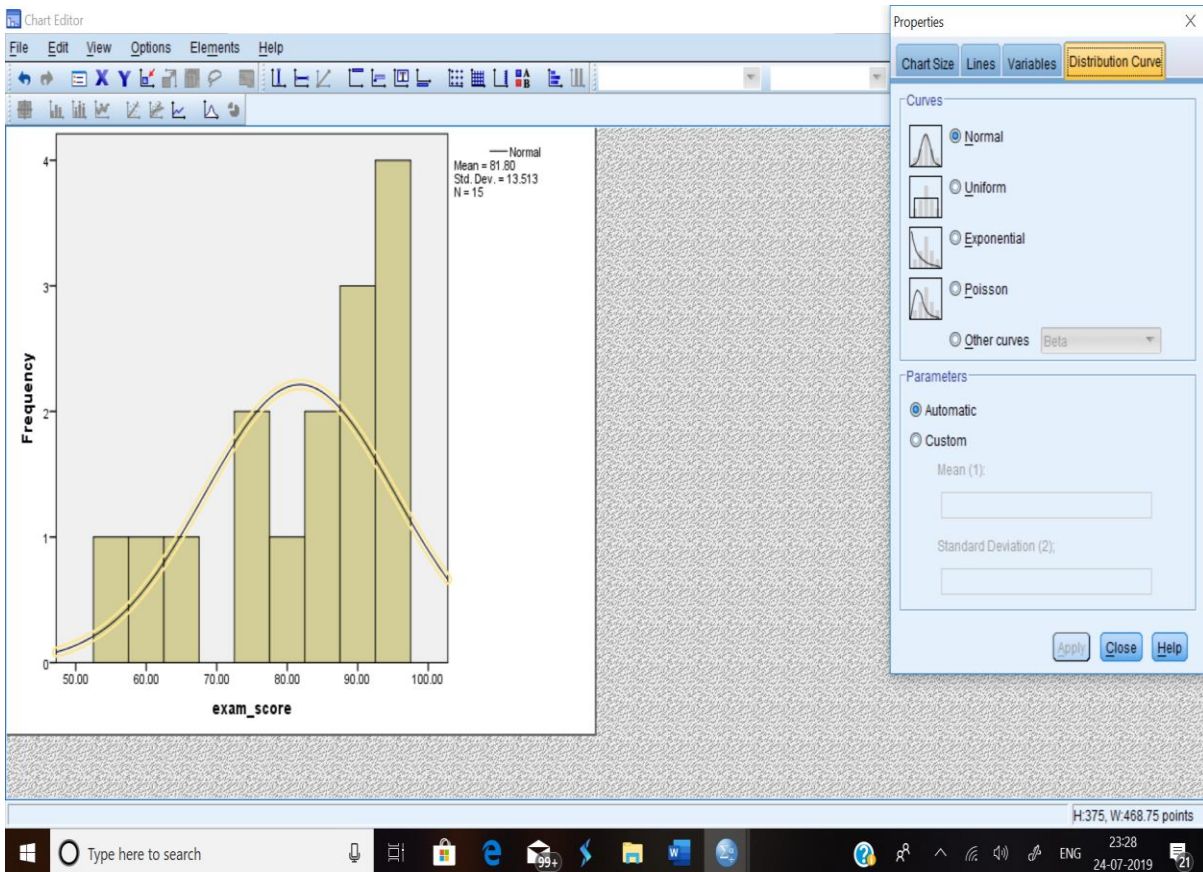
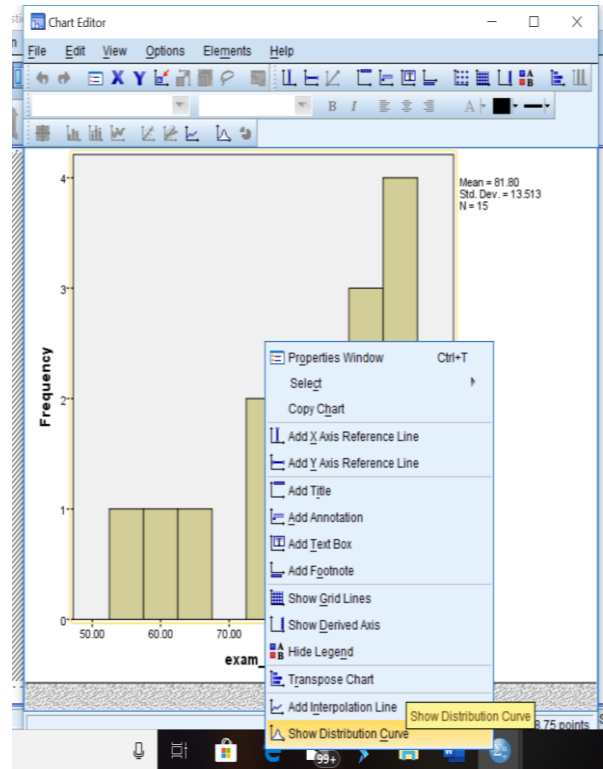
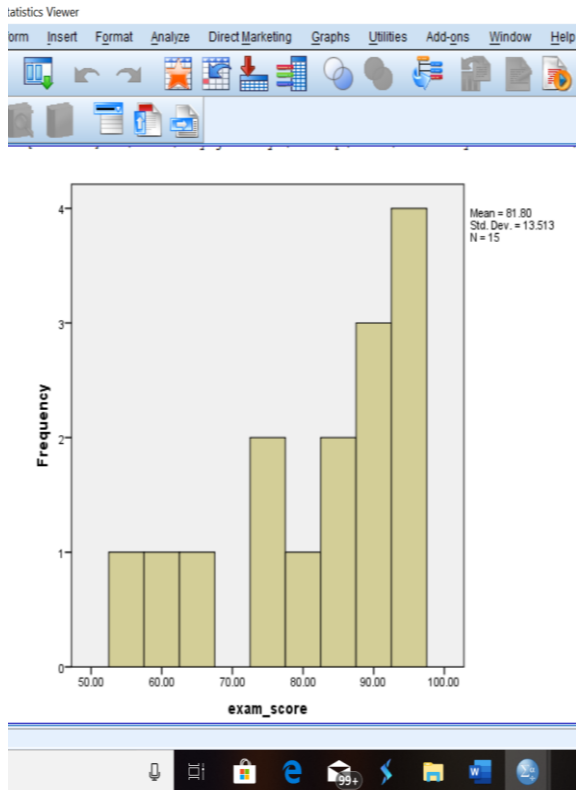


Histogram

Path

Graph – Legacy Dialogs -- Histogram

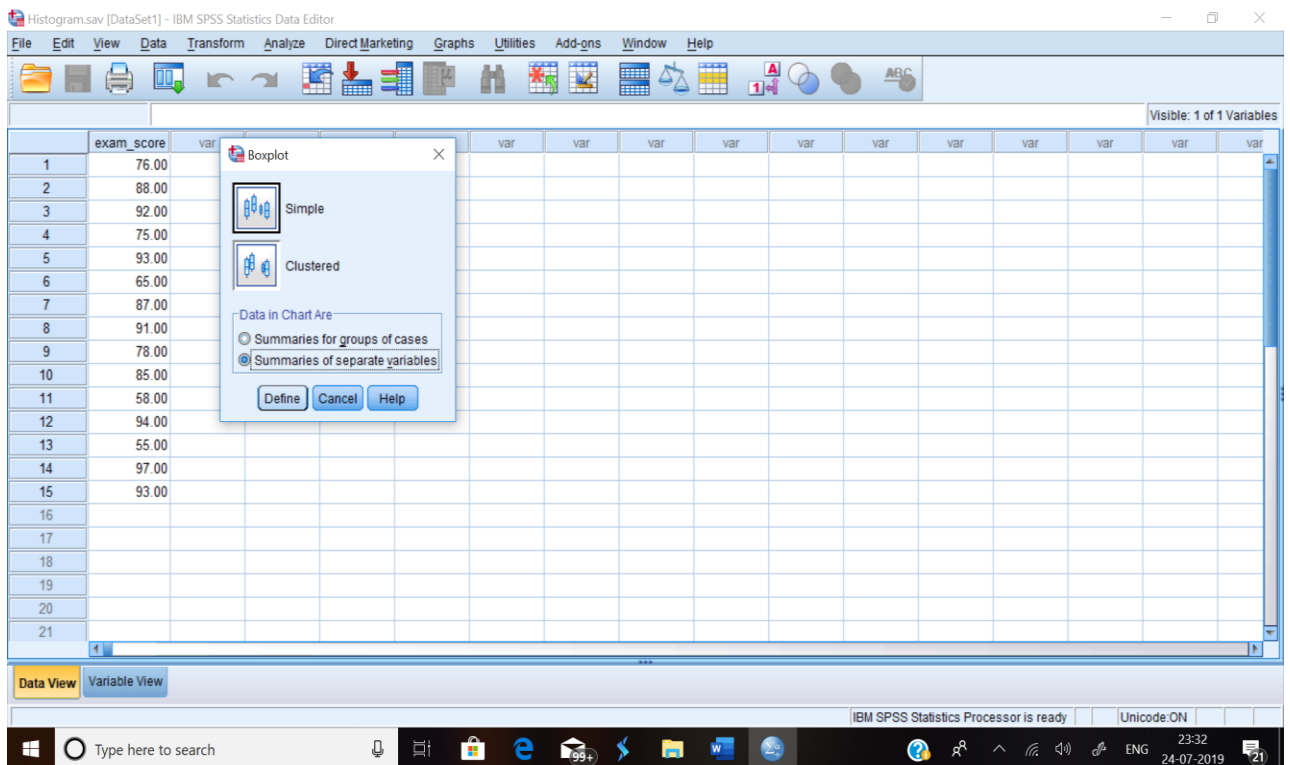
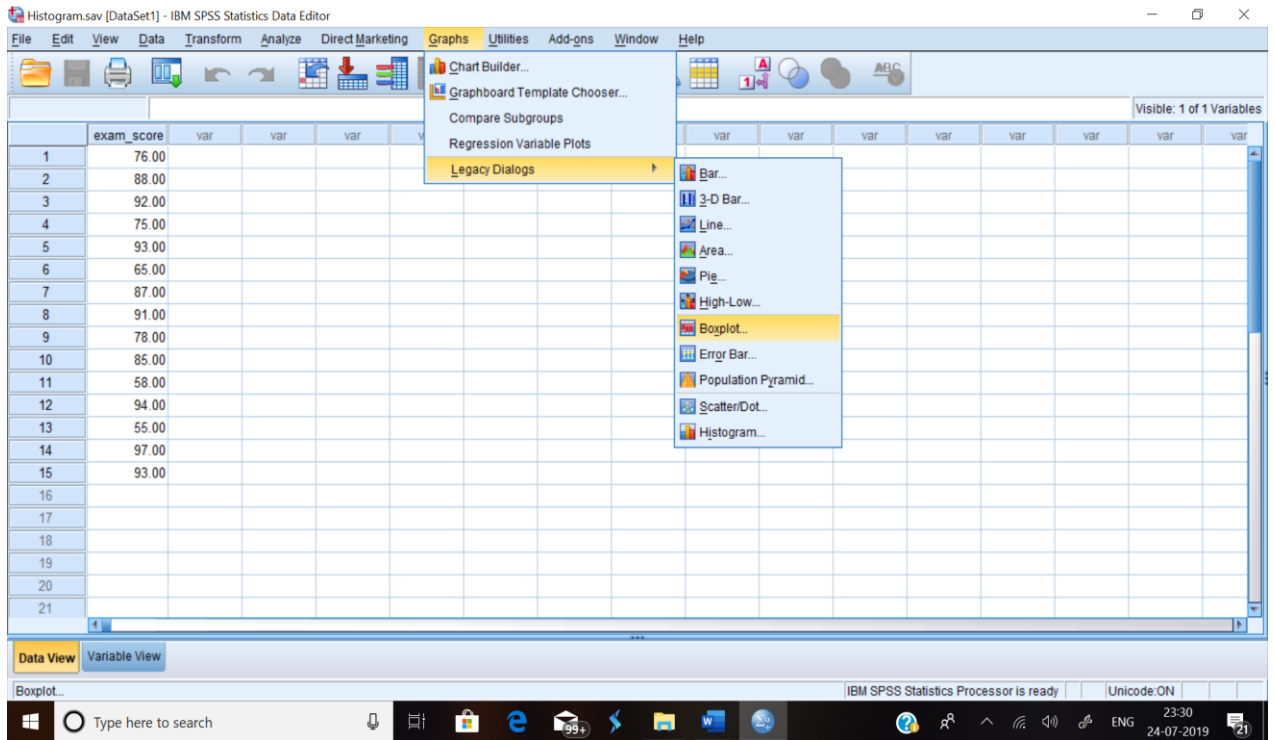




BOX PLOT

Path

Graph – Legacy Dialogs -- Boxplot



Histogram.sav [DataSet1] - IBM SPSS Statistics Data Editor

File Edit View Data Transform Analyze Direct Marketing Graphs Utilities Add-ons Window Help

Define Simple Boxplot: Summaries of Separate Variables

Boxes Represent: exam_score

Label Cases by:

Panel by:

Rows:

Nest variables (no empty rows)

Columns:

Nest variables (no empty columns)

OK Paste Reset Cancel Help

	exam_score
1	76.00
2	88.00
3	92.00
4	75.00
5	93.00
6	65.00
7	87.00
8	91.00
9	78.00
10	85.00
11	58.00
12	94.00
13	55.00
14	97.00
15	93.00
16	
17	
18	
19	
20	
21	

Data View Variable View

IBM SPSS Statistics Processor is ready Unicode: ON

Type here to search 23:33 24-07-2019

*Output2 [Document2] - IBM SPSS Statistics Viewer

File Edit View Data Transform Insert Format Analyze Direct Marketing Graphs Utilities Add-ons Window Help

Output

- Log
- Explore
 - Title
 - Notes
 - Case Processing
 - Boxplot

exam_score

IBM SPSS Statistics Processor is ready Unicode: ON

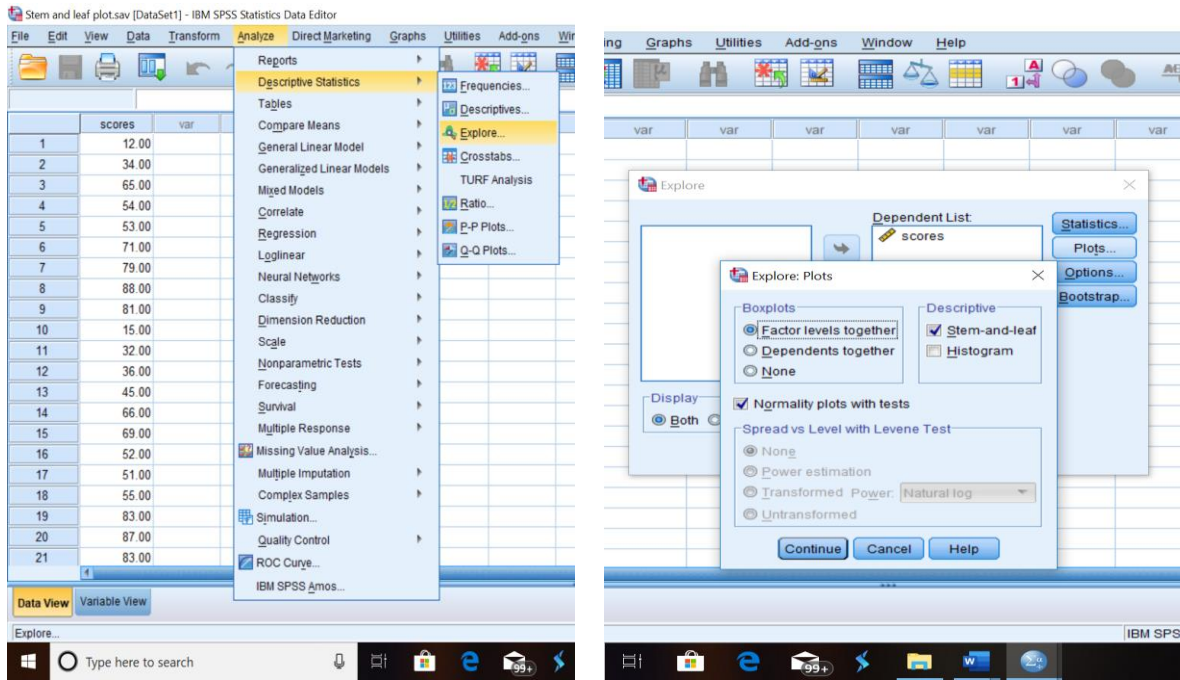
Type here to search 23:33 24-07-2019

STEM AND LEAF PLOT

Path

Analyse – Descriptive Statistics - Explore

(Eg: 1.245 represents 12,14, 15. In this stem 1 and leaf is 245)



scores

scores Stem-and-Leaf Plot

Frequency	Stem & Leaf
3.00	1 . 258
3.00	2 . 135
3.00	3 . 246
5.00	4 . 22345
7.00	5 . 1233458
4.00	6 . 2569
2.00	7 . 19
9.00	8 . 133455789
1.00	9 . 1

Stem width: 10.00
Each leaf: 1 case(s)

1.256 ; 12,15,16
2.135; 21,23,25
3.246; 32,34,36 etc
(the raw scores of the data are in the above manners)

SCATTER BLOT

Path Graph – Legacy dialogue– Scatter / Dot

Statistics Viewer

Graphs > Legacy Dialogues > Scatter/Dot

CORRELATIONS
/VARIABLES=Hours_media College_GPA
/PRINT=TWO TAIL NOSIG
/MISSING=PAIRWISE.

Correlations

	Hours_media	College_GPA
Hours_media	Pearson Correlation	1
	Sig. (2-tailed)	.001
	N	20
College_GPA	Pearson Correlation	-.661**
	Sig. (2-tailed)	.001
	N	20

** . Correlation is significant at the 0.01 level (2-tailed).

Simple Scatterplot

Y Axis: College_GPA

X Axis: Hours_media

Set Markers by:

Label Cases by:

Panel by:

Rows:

Columns:

Template: Use chart specifications from:

OK Paste Reset Cancel Help

Statistics Viewer

Graphs > Legacy Dialogues > Scatter/Dot

CORRELATIONS
/VARIABLES=Hours_media College_GPA
/PRINT=TWO TAIL NOSIG
/MISSING=PAIRWISE.

Statistics Viewer

GRAPH
/SCATTERPLOT(BIVAR)=Hours_media WITH College_GPA
/MISSING=LISTWISE.

** . Correlation is significant at the 0.01 level (2-tailed).

Correlations

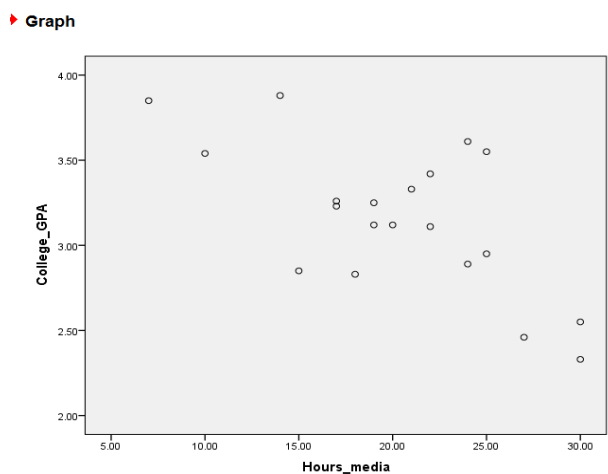
	Hours_media	College_GPA
Hours_media	Pearson Correlation	1
	Sig. (2-tailed)	.001
	N	20
College_GPA	Pearson Correlation	-.661**
	Sig. (2-tailed)	.001
	N	20

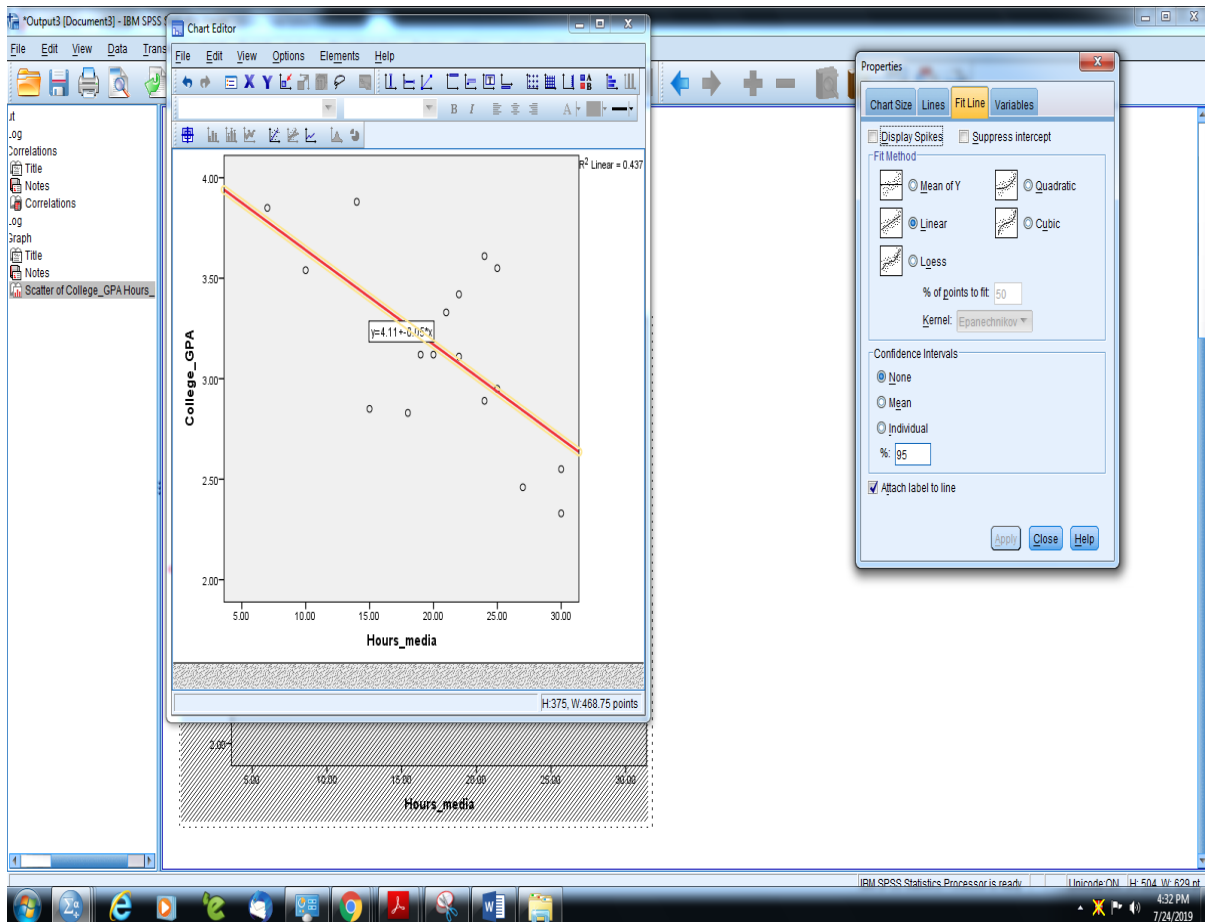
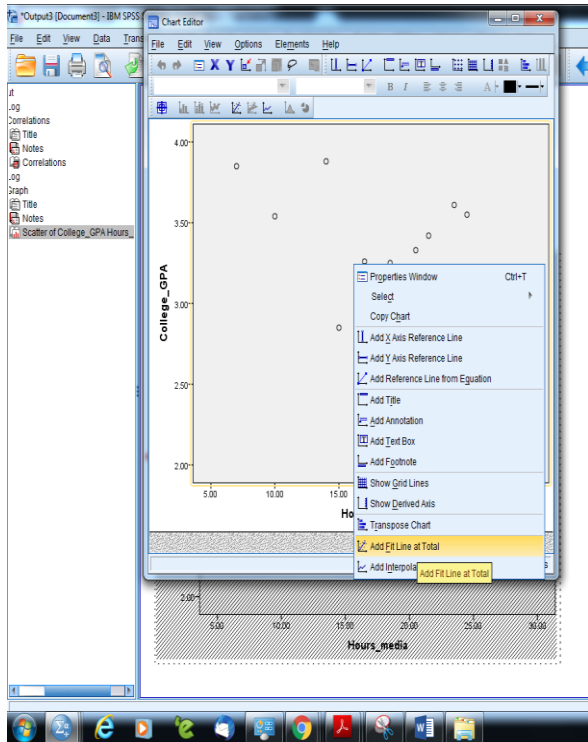
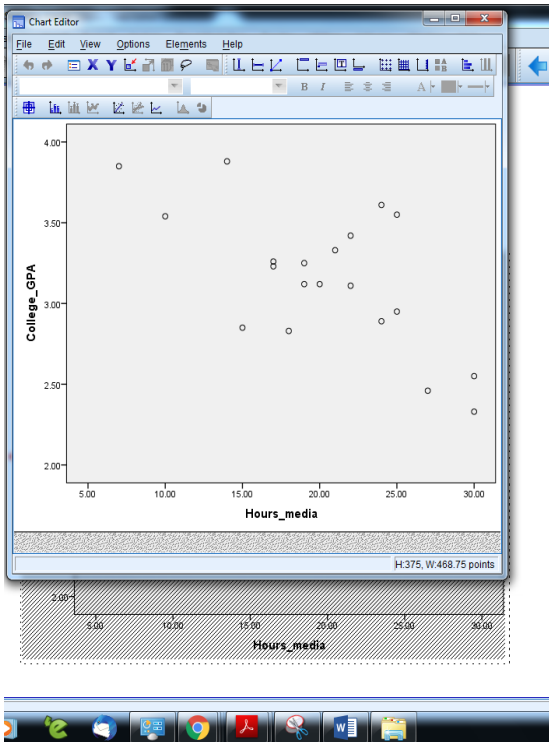
** . Correlation is significant at the 0.01 level (2-tailed).

Scatter/Dot

Simple Scatter, Matrix Scatter, Simple Dot, Overlay Scatter, 3-D Scatter

Define Cancel Help





PIE CHART

Path

Graph – Legacy Dialogs – Pie

